

LOC/DME I-GHI 110.9 Chan 46	APP CRS 267°	Rwy Idg 10000 TDZE 88 Apt Elev 97
---	------------------------	--

HOUSTON/

ILS or LOC RWY 27

GEORGE BUSH INTERCONTINENTAL/HOUSTON (IAH)

▼ For inoperative ALSF, increase S-ILS 27 Cat E visibility to RVR 4000 and S-LOC 27 Cat E visibility to 1½. Simultaneous approach authorized with runway 26L/R. LOC procedure NA during simultaneous operations.

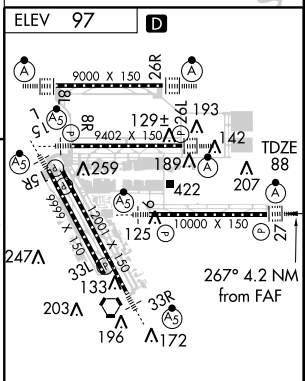
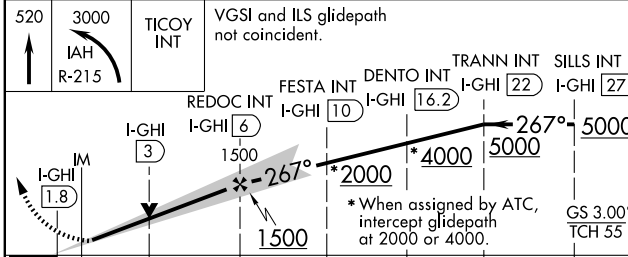
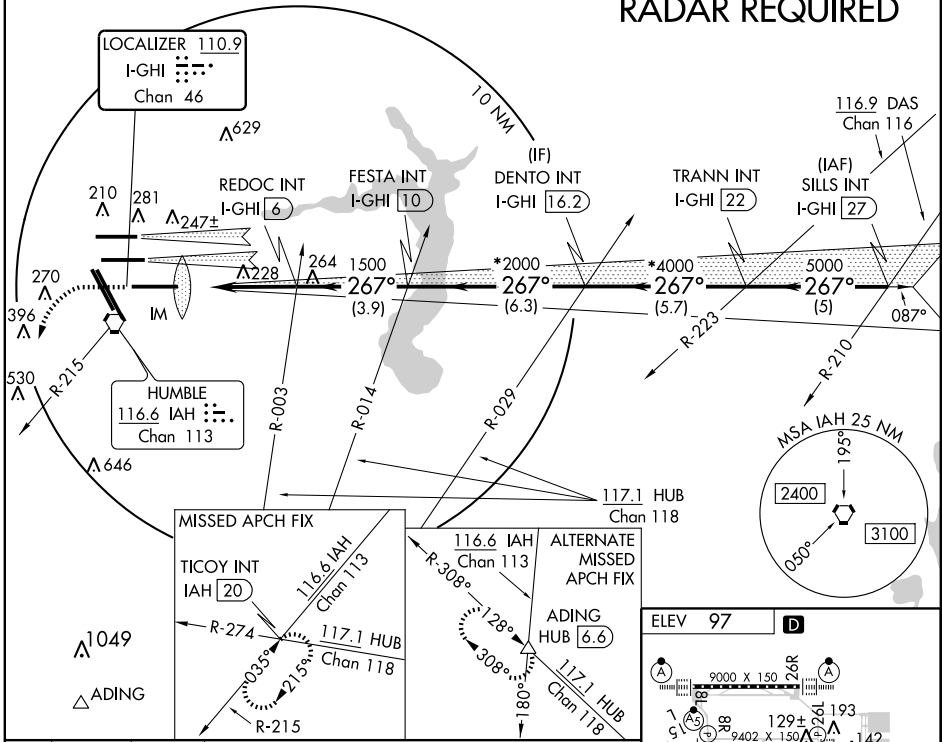
ALSF-2



MISSED APPROACH: Climb to 520 then climbing left turn to 3000 via IAH VORTAC R-215 to TICQY INT/IAH 20 DME and hold.

ATIS 124.05	HOUSTON APP CON 120.05 379.1 EAST 124.35 316.15 WEST	HOUSTON TOWER 120.725 125.35 127.3 135.15 288.25 290.2	GND CON 118.575 119.95 121.7	CLNC DEL 128.1
-----------------------	--	--	--	--------------------------

RADAR REQUIRED



CATEGORY	A	B	C	D	E
S-ILS 27	288/18 200 (200-½)				
S-LOC 27	520/24	432 (500-½)	520/40 432 (500-¾)	520/50	432 (500-1)

TDZ/CL Rwy's 8R, 8L, 15R, 26R, 26L, 27 and 33L					
HIRL all Rwy's					
FAF to MAP 4.2 NM					
Knots	60	90	120	150	180
Min:Sec	4:12	2:48	2:06	1:41	1:24

SC-5, 10 MAR 2011 to 07 APR 2011

SC-5, 10 MAR 2011 to 07 APR 2011