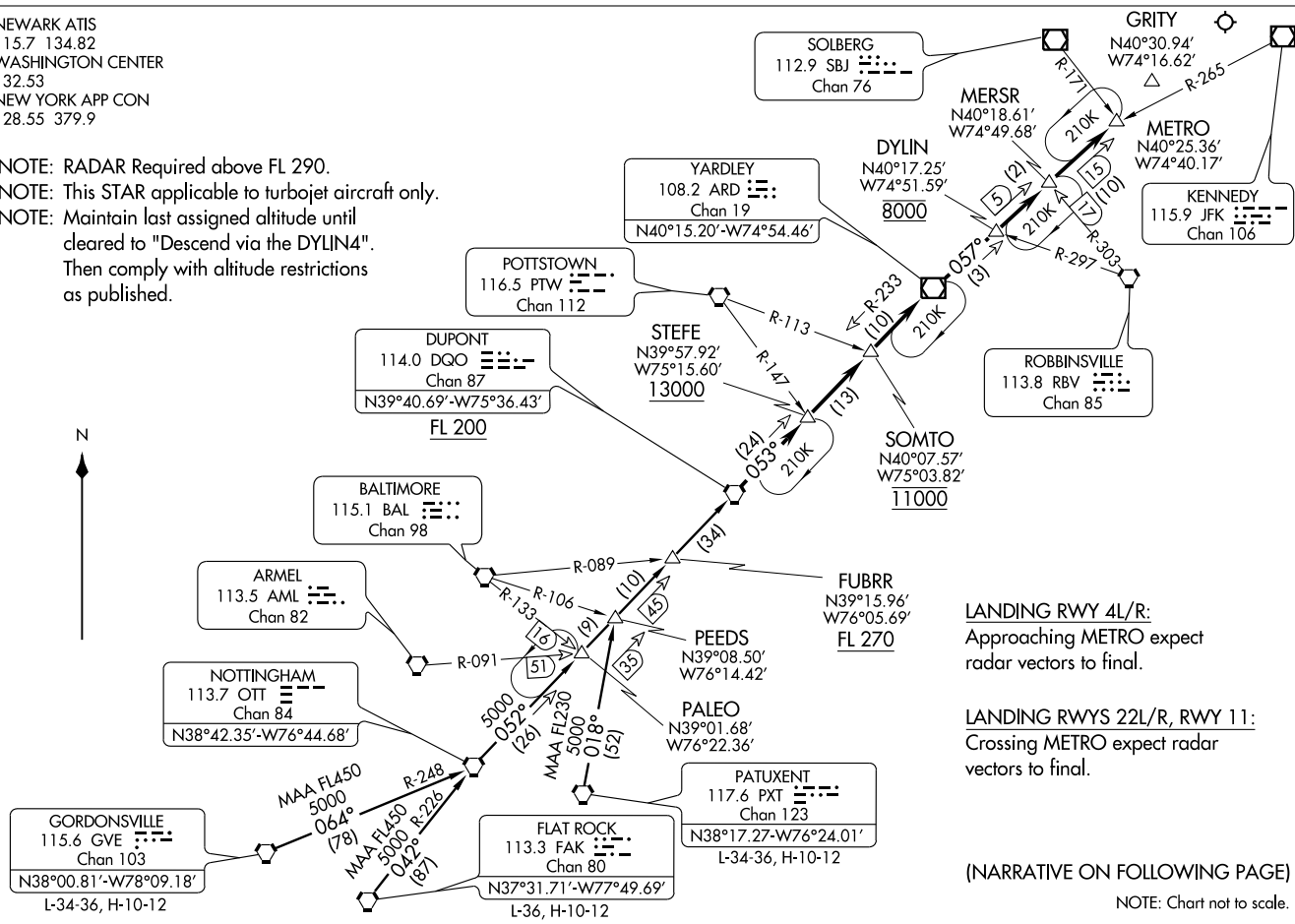


NEWARK ATIS
115.7 134.82
WASHINGTON CENTER
132.53
NEW YORK APP CON
128.55 379.9

NOTE: RADAR Required above FL 290.
NOTE: This STAR applicable to turbojet aircraft only.
NOTE: Maintain last assigned altitude until cleared to "Descend via the DYLIN4".
Then comply with altitude restrictions as published.



LANDING RWY 4L/R:
Approaching METRO expect radar vectors to final.

LANDING RWYS 22L/R, RWY 11:
Crossing METRO expect radar vectors to final.

(NARRATIVE ON FOLLOWING PAGE)

NOTE: Chart not to scale.